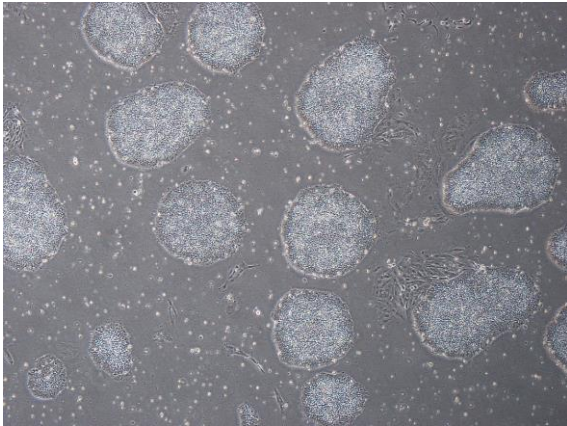
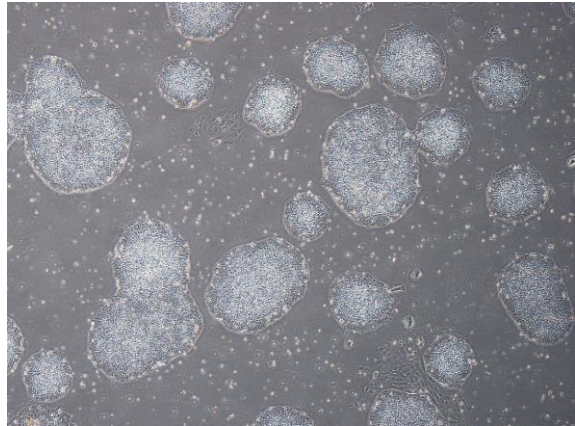


【 CiRA-j-1029 】 Morphology of iPSC colonies

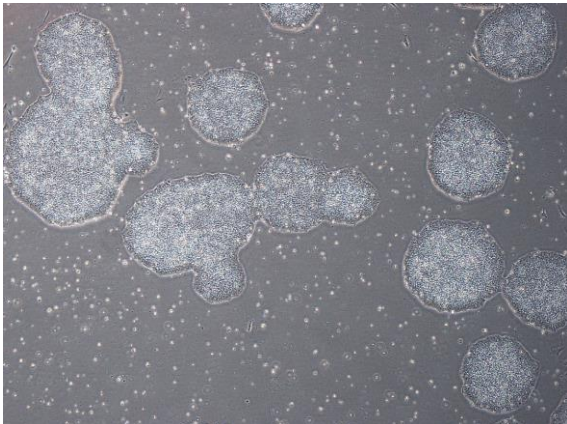
CiRA-j-1029-A: passage-2



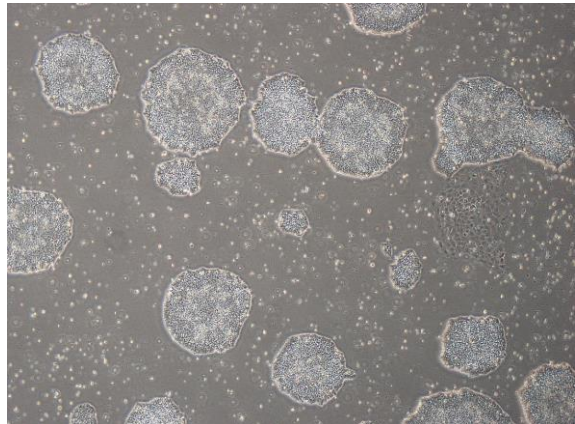
CiRA-j-1029-B: passage-2



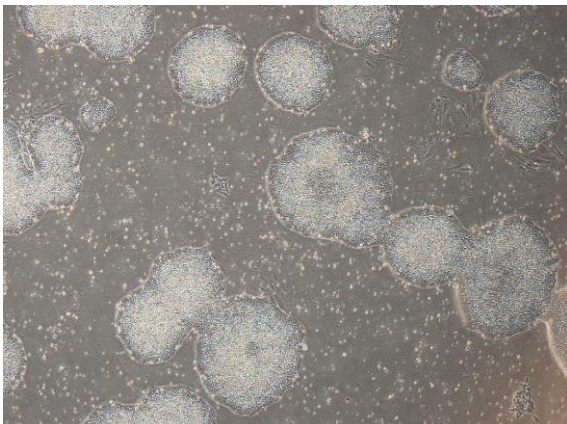
CiRA-j-1029-C: passage-2



CiRA-j-1029-D: passage-2



CiRA-j-1029-E: passage-2



CiRA-j-1029-F: passage-2



(All images were captured at 4x magnification)